

ATHENA

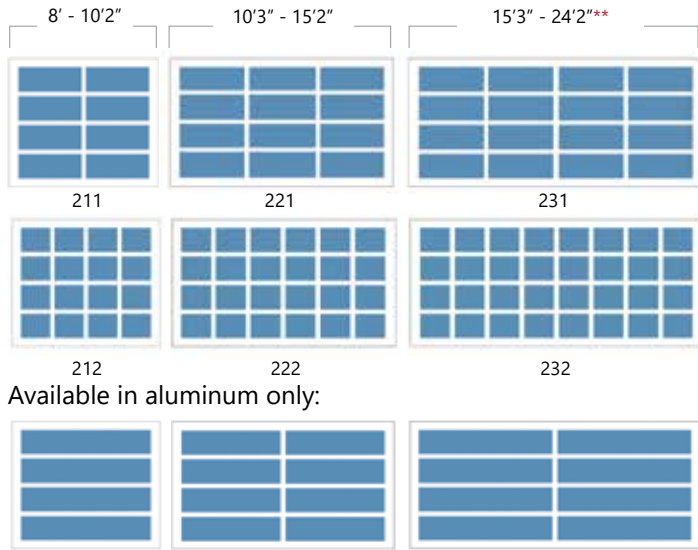


ATHENA SPECS

LIMITED LIFETIME WARRANTY †

Panel Styles

23/24 gauge steel or 14 gauge aluminum.



Available in aluminum only:

Athena Configurations

Standard
Clear anodized aluminum, narrow borders, standard hardware.

Supreme
Any anodized or powder color, wide borders, premium hardware.

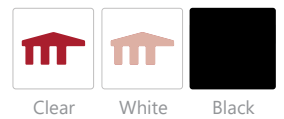
Window Tint

Insulated glass options are available for most window types. Glass and acrylic have different tints.

Glass/Acrylic



Laminate



Insulation

Add insulation for thermal efficiency, noise reduction, durability, and minimal upkeep.



Insulated Frame Upgrade

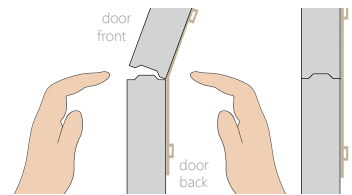
Hardware

Includes roller, track and accessories for a strong and lasting door system.

Martin Premium Hardware Package



Limited Lifetime Warranty †

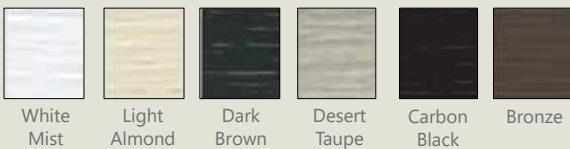


Full pinch-proof joint is available in steel and aluminum Athena.

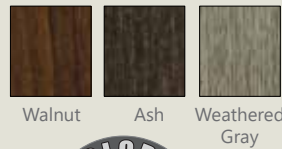
Standard Steel Paint Colors

Long-Lasting baked-on enamel paint.

Paint*



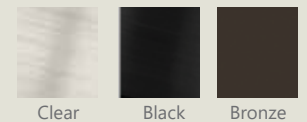
Wood Grain*



Anodized Finish

A natural looking, durable, and corrosion-resistant finish. Other colors available upon request.

Aluminum

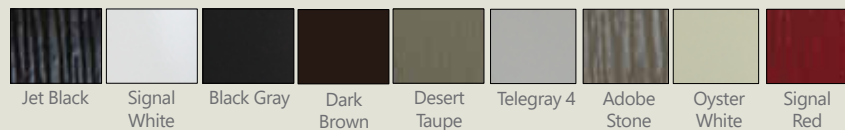


Popular Powder Coat Finishes

Steel or Aluminum (smooth or embossed)



Solid



Metallic



Texture

Smooth or embossed textures are available on this door.



*** Please obtain physical samples before ordering. ***

† See manufacturer's written warranty for details and limitations.
**Steel limited to 20'2" wide.
*Available in steel only.

CONTACT YOUR MARTIN DOOR DEALER TODAY

Door Builder

Use your own home photo to configure a custom garage door in minutes!



2828 S 900 W, Salt Lake City, UT 84119
1-800-388-9310
martindoor.com



12/2021